



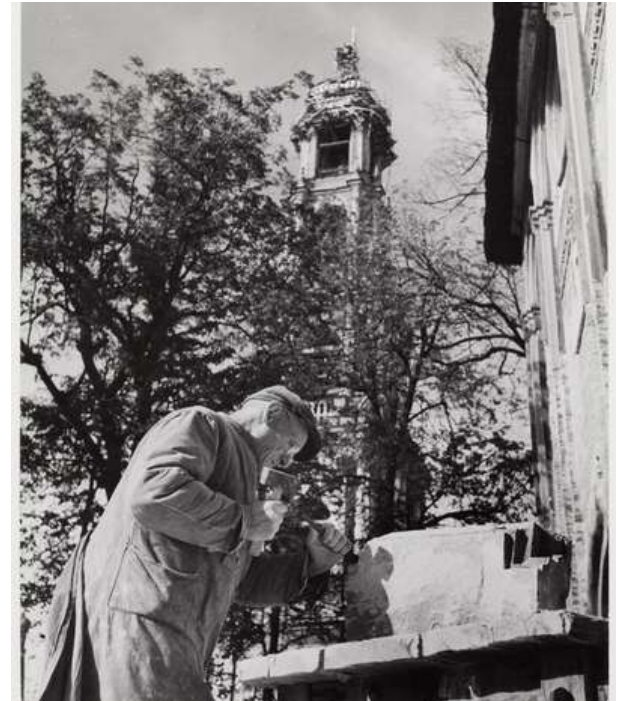
KORTA

MATERIAL BOOK

Changing the way you see outdoor showers forever.

As an international leader in the design, production, and marketing of outdoor designer products, KORTA is present in more than 35 countries worldwide. Universally recognized for high-quality designer products, we embody the best of European style and craftsmanship in outdoor décor and design.

For those seeking tranquility in their own outdoor spaces, KORTA provides aesthetic, designer showers and accessories crafted from premium natural materials. We believe in the power of nature to bring calmness and balance into daily life while prioritizing the environmental impact of our products on the planet.



Stone and similar materials are deeply rooted in our family history. Our legacy dates back to 1995. Since then, KORTA GROUP is a visionary company specializing in luxury outdoor solutions, combining natural elements with modern design.

Our expertise lies in creating high-end outdoor showers, bathtubs, and stone-based architectural pieces made outdoor living.



KANFANAR

SANDBLASTED + BRUSHED

Sandblasting mechanically removes weaker surface particles and opens the natural pore structure, creating a uniform, anti-slip texture. This process stabilizes the outer layer and exposes the stone's true mineral composition. Subsequent brushing refines the surface by smoothing sharp micro-edges and compacting the top layer. While not sealing the stone chemically, this treatment reduces active capillary absorption, minimizes dusting, and improves long-term resistance to moisture and staining.

The result is a tactile, structurally stable finish with controlled absorption, ideal for outdoor architectural applications and wet environments.

Flexural strength

- average value 9,4 MPa
- standard deviation 1,4 MPa
- lower expectation 6,9 MPa

Water absorption at atmospheric pressure A_b 0,68 (%)

Apparent density ρ_b 2640 kg/m³

Open porosity p_o 32,10 %

Frost resistance (Change of flexural strength after 56 freezing cycles)

- average value before frost-thawing changes 9,4 MPa
- average value after frost-thawing changes 6,9 MPa

Reaction to fire

Class A1



KANFANAR

BRUSHED / HONED

Brushing mechanically smooths the surface using abrasive tools that remove loose particles and soften micro-irregularities. This process compacts the top layer, rounds exposed grains, and creates a subtle, matte texture that enhances the stone's natural depth.

Although not chemically sealed, the brushing treatment reduces superficial dusting and stabilizes capillary behavior, resulting in more controlled moisture absorption and improved durability in outdoor environments.

Flexural strength

- average value 9,4 MPa
- standard deviation 1,4 MPa
- lower expectation 6,9 MPa

Water absorption at atmospheric pressure Ab 0,68 (%)

Apparent density ρ_b 2640 kg/m

Open porosity p_o 32,10 %

Frost resistance (Change of flexural strength after 56 freezing cycles)

- average value before frost-thawing changes 9,4 MPa
- average value after frost-thawing changes 6,9 MPa

Reaction to fire

Class A1



KANFANAR

FLAMED + BRUSHED

Flaming exposes the stone surface to high temperatures, causing controlled thermal shock that removes weaker mineral particles and creates a textured, slip-resistant surface. This process opens the natural grain structure and strengthens the outer layer by eliminating fragile components.

Subsequent brushing refines the texture by smoothing sharp peaks created during flaming and compacting the surface. This step stabilizes the microstructure, reduces loose particles, and moderates capillary absorption without chemically sealing the stone.

The result is a durable, anti-slip finish with controlled absorption and a balanced, natural appearance, ideal for high-traffic outdoor architectural environments.

Flexural strength

- average value 9,4 MPa
- standard deviation 1,4 MPa
- lower expectation 6,9 MPa

Water absorption at atmospheric pressure Ab 0,68 (%)

Apparent density ρ_b 2640 kg/m

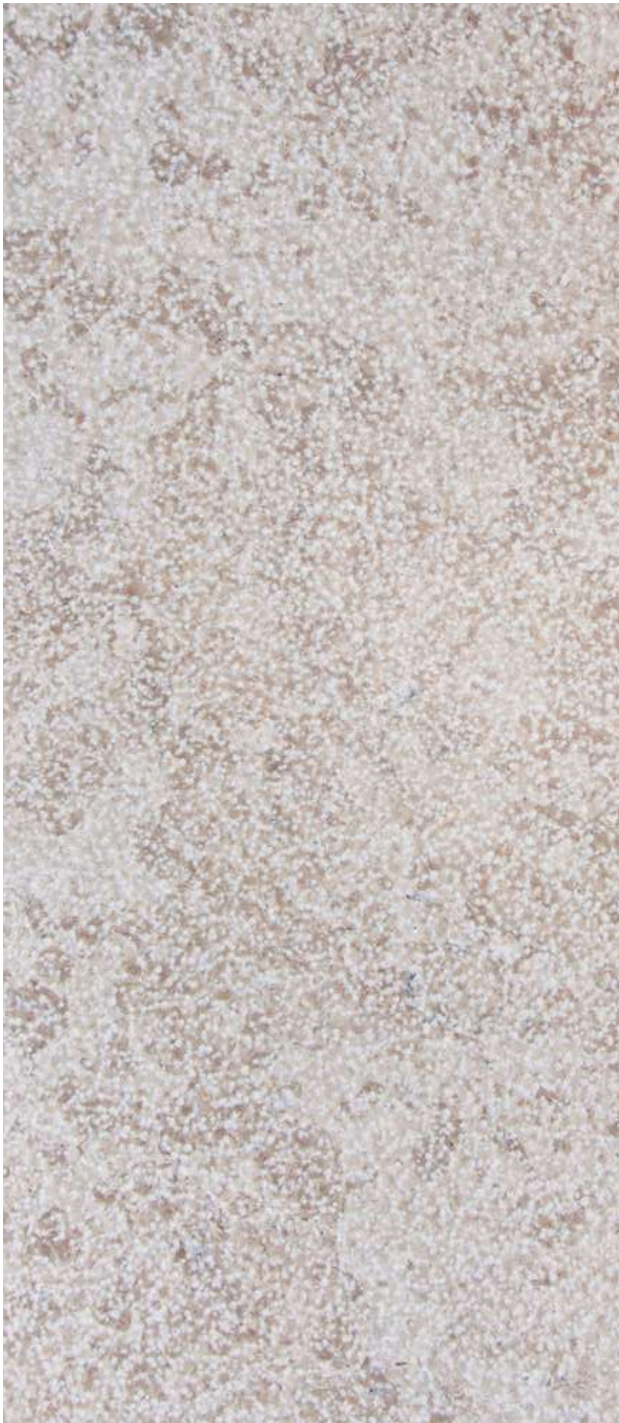
Open porosity ρ_o 32,10 %

Frost resistance (Change of flexural strength after 56 freezing cycles)

- average value before frost-thawing changes 9,4 MPa
- average value after frost-thawing changes 6,9 MPa

Reaction to fire

Class A1



KANFANAR

BUSH HAMMERED + BRUSHED

The surface is first bush hammered to create a consistent, textured relief across the stone. It is then brushed to soften the peaks and enhance the natural grain.

This dual process results in a surface that is strongly tactile yet comfortable to the touch. The brushing phase reduces sharpness while preserving depth and character, creating a balanced and sophisticated appearance.

The finish offers excellent slip resistance, making it ideal for outdoor and wet environments. It performs exceptionally well in pool areas, spa settings, terraces, and architectural applications exposed to weather conditions.

Flexural strength

-average value 9,4 MPa

-standard deviation 1,4 MPa

-lower expectation 6,9 MPa

Water absorption at atmospheric pressure A_b 0,68 (%)

Apparent density ρ_b 2640 kg/m

Open porosity p_o 32,10 %

Frost resistance (Change of flexural strength after 56 freezing cycles)

-average value before frost-thawing changes 9,4 MPa

-average value after frost-thawing changes 6,9 MPa

Reaction to fire

Class A1



KANFANAR

RIGATO

Directional finish defined by precise, linear grooves carved into the stone surface. The pattern can vary in depth and rhythm, from subtle texture to a more pronounced architectural expression.

The process enhances the material's natural structure while creating a strong visual identity through light and shadow. Depending on orientation, the lines can visually elongate or emphasize proportions within a space.

Beyond aesthetics, the grooved surface increases slip resistance, making it suitable for exterior walls, flooring, pool surroundings, and feature elements.

Flexural strength

- average value 9,4 MPa
- standard deviation 1,4 MPa
- lower expectation 6,9 MPa

Water absorption at atmospheric pressure A_b 0,68 (%)

Apparent density ρ_b 2640 kg/m

Open porosity p_o 32,10 %

Frost resistance (Change of flexural strength after 56 freezing cycles)

- average value before frost-thawing changes 9,4 MPa
- average value after frost-thawing changes 6,9 MPa

Reaction to fire

Class A1



DEKTON

LAURENT

Dekton is a carbon neutral ultracompact porcelain surface with an optimised manufacturing process inspired by the beauty and aesthetics of natural stone that goes beyond nature, achieving the highest product performance.

With a great variety of colours and sizes, Dekton inspires the future of architecture and design by creating soulful spaces where beauty and functionality coexist in perfect synergy.

Inspired by the natural stone Port Laurent, the striking colorway features a dramatic dark brown background crisscrossed with veins of gold.

Flexural strength (avg.)

~60–67 N/mm²

Water absorption at atm. pressure

≤ 0.1 %

Open porosity

~0.2 %

Apparent density $\rho(b)$

2.50–2.61 g/cm³

Frost resistance

No damage after freeze/thaw

Reaction to fire

A1 / A2 s1 d0 (with mesh)



DEKTON

KIRA

Dekton is a carbon neutral ultracompact porcelain surface with an optimised manufacturing process inspired by the beauty and aesthetics of natural stone that goes beyond nature, achieving the highest product performance.

With a great variety of colours and sizes, Dekton inspires the future of architecture and design by creating soulful spaces where beauty and functionality coexist in perfect synergy.

Inspired by natural stone, it resembles Gris Pulpis thanks to its elegance and versatility. Kira is a colour based on earthy tones and has contrasting light grey veining. Fine veining – naturally arranged throughout the slab – and the smooth matte texture endow it with a timeless colour.

Flexural strength (avg.)

~60–67 N/mm²

Water absorption at atm. pressure

≤ 0.1 %

Open porosity

~0.2 %

Apparent density $\rho(b)$

2.50–2.61 g/cm³

Frost resistance

No damage after freeze/thaw

Reaction to fire

A1 / A2 s1 d0 (with mesh)



DEKTON

AWAKE

Dekton is a carbon neutral ultracompact porcelain surface with an optimised manufacturing process inspired by the beauty and aesthetics of natural stone that goes beyond nature, achieving the highest product performance.

With a great variety of colours and sizes, Dekton inspires the future of architecture and design by creating soulful spaces where beauty and functionality coexist in perfect synergy.

A reinterpretation of the iconic attributes of the precious Paonazzo stone. Thick veining with gradients of light grays, and creams, with luscious rusty terracotta and subtle inky blues.

Flexural strength (avg.)

~60–67 N/mm²

Water absorption at atm. pressure

≤ 0.1 %

Open porosity

~0.2 %

Apparent density $\rho(b)$

2.50–2.61 g/cm³

Frost resistance

No damage after freeze/thaw

Reaction to fire

A1 / A2 s1 d0 (with mesh)



DEKTON

MORPHEUS

Dekton is a carbon neutral ultracompact porcelain surface with an optimised manufacturing process inspired by the beauty and aesthetics of natural stone that goes beyond nature, achieving the highest product performance.

With a great variety of colours and sizes, Dekton inspires the future of architecture and design by creating soulful spaces where beauty and functionality coexist in perfect synergy.

With a white base, it presents different shades, reflections and flashes of color in the form of veining. It has a velvet finish that softens its tonality.

Flexural strength (avg.)

~60–67 N/mm²

Water absorption at atm. pressure

≤ 0.1 %

Open porosity

~0.2 %

Apparent density $\rho(b)$

2.50–2.61 g/cm³

Frost resistance

No damage after freeze/thaw

Reaction to fire

A1 / A2 s1 d0 (with mesh)



DEKTON

MARMORIO

Dekton is a carbon neutral ultracompact porcelain surface with an optimised manufacturing process inspired by the beauty and aesthetics of natural stone that goes beyond nature, achieving the highest product performance.

With a great variety of colours and sizes, Dekton inspires the future of architecture and design by creating soulful spaces where beauty and functionality coexist in perfect synergy.

Its light striped structure with filled pores, which gives an elegant, bright and lightweight look to any design, is inspired by Travertino Navona, a natural stone quarried near Tivoli, east of Rome.

Flexural strength (avg.)

~60–67 N/mm²

Water absorption at atm. pressure

≤ 0.1 %

Open porosity

~0.2 %

Apparent density $\rho(b)$

2.50–2.61 g/cm³

Frost resistance

No damage after freeze/thaw

Reaction to fire

A1 / A2 s1 d0 (with mesh)



APE GRUPO

BRAZIL GREEN

Nature is radiantly represented in Brazil, a collection inspired by the beauty of the Carrara quarries, located in the north of Tuscany. This collection stands out for its complex veins and cracks, which give each piece a unique identity. Green tones blend with earthy hues, paying tribute to the Calacatta stone. Additionally, the delicate whitish veins bring a subtle glow and a unique movement, imbuing the pieces with exceptional character that appeals to design professionals.

Flexural strength

≥ 35–50 MPa (typical porcelain body)

Water absorption

≤ 0.1–0.5 % (impervious)

Apparent density (ρ_b)

~2.3–2.5 g/cm³ (typical porcelain)

Open porosity (ρ_o)

Very low / near zero

Frost resistance

Frost-Proof / no visible damage

Reaction to fire

A1 non-combustible

APE GRUPO

NOVELDA BONE

Accepting the passage of time is assuming that imperfections are part of beauty, that they tell stories of the past, and that they are a symbol of all the learning gained through experience. Novelda, a ceramic marble inspired by Navona travertine, features nuances and details in its design that allow us to interpret the passage of time as something inevitable yet beautiful at the same time.

Flexural strength

≥ 35–50 MPa (typical porcelain body)

Water absorption

≤ 0.1–0.5 % (impervious)

Apparent density (ρ_b)

~2.3–2.5 g/cm³ (typical porcelain)

Open porosity (po)

Very low / near zero

Frost resistance

Frost-Proof / no visible damage

Reaction to fire

A1 non-combustible



APE GRUPO

LOMBARDA GREY

The Lombarda Grey collection embodies a tribute to the philosophy of spatial design. Inspired by the natural allure of Lombarda Grey marble, quarried from the Lombardy region in Italy, this collection captivates with its soft grey tones and uniform texture, adorned with subtle or almost imperceptible veins. This marble exudes understated elegance and enduring appeal. Highly valued for its versatility, Lombarda Grey marble stands out as an ideal choice for both interior and exterior design applications. Renowned for its timeless beauty and robustness, this marble-inspired collection emerges as a sophisticated and versatile option for a variety of design projects.

Flexural strength

≥ 35–50 MPa (typical porcelain body)

Water absorption

≤ 0.1–0.5 % (impervious)

Apparent density (ρ_b)

~2.3–2.5 g/cm³ (typical porcelain)

Open porosity (p_o)

Very low / near zero

Frost resistance

Frost-Proof / no visible damage

Reaction to fire

A1 non-combustible





APE GRUPO

BLACK HISPANIA

Black Hispania draws inspiration from the authentic Negro Marquina, a limestone of Spanish with unique characteristics. The inherent value of Black Hispania's fundamental material is widely recognized thanks to its aesthetic and durable properties. Its extremely fine and compact texture bestows an elegant and sophisticated appearance. The aesthetic quality of Black Hispania, coupled with its durability and rich geological history, makes it an ideal choice for those seeking to create exclusive and refined rooms.,

Flexural strength

≥ 35–50 MPa (typical porcelain body)

Water absorption

≤ 0.1–0.5 % (impervious)

Apparent density (ρ_b)

~2.3–2.5 g/cm³ (typical porcelain)

Open porosity (p_o)

Very low / near zero

Frost resistance

Frost-Proof / no visible damage

Reaction to fire

A1 non-combustible



APE GRUPO

BRECCIA VIOLA

Breccia embodies the beauty and history of the homonymous Capraia stone. Coming from Italy, this collection stands out for its rustic appearance, although colorful, soft but deep. For centuries it was used in the construction and decoration of buildings and monuments such as the Torre Velasca in Milan, and today it comes to your spaces to give them a new meaning. Its white background intermingled with reddish areas and purple and greenish veins transports us to Roman times, evoking the majesty of yesteryear.

Flexural strength

≥ 35–50 MPa (typical porcelain body)

Water absorption

≤ 0.1–0.5 % (impervious)

Apparent density (ρ_b)

~2.3–2.5 g/cm³ (typical porcelain)

Open porosity (p_o)

Very low / near zero

Frost resistance

Frost-Proof / no visible damage

Reaction to fire

A1 non-combustible



MARAZZI

VERDE AVER

A rich, deep green stone-inspired finish with subtle veining that evokes natural marble elegance.

Technological innovation, aesthetic refinement, and innate versatility: The Top, a selection of large-size porcelain stoneware Marazzi slabs specially designed for the creation of tops, backsplashes, tables, doors, and infinite tailor-made furnishing options for residential and commercial locations. The Top guarantees excellent technical performance, the result of exclusive research into materials and the application of the most advanced technologies.

Flexural strength

~45 MPa (≥ 35 MPa)

Water absorption

$\leq 0.5\%$ (often $\leq 0.05\%$)

Apparent density

~2.3–2.5 g/cm³ (typical porcelain)

Open porosity

Very low / near zero (impervious)

Frost resistance

Frost-Proof / Freeze-thaw resistant

Reaction to fire

A1 non-combustible



MARAZZI

SODALITE BLU

A dramatic blue-grey porcelain finish with bold, fluid veins for a striking, contemporary look.

Technological innovation, aesthetic refinement, and innate versatility: The Top, a selection of large-size porcelain stoneware Marazzi slabs specially designed for the creation of tops, backsplashes, tables, doors, and infinite tailor-made furnishing options for residential and commercial locations. The Top guarantees excellent technical performance, the result of exclusive research into materials and the application of the most advanced technologies.

Flexural strength

~45 MPa (≥ 35 MPa)

Water absorption

$\leq 0.5\%$ (often $\leq 0.05\%$)

Apparent density

~2.3–2.5 g/cm³ (typical porcelain)

Open porosity

Very low / near zero (impervious)

Frost resistance

Frost-Proof / Freeze-thaw resistant

Reaction to fire

A1 non-combustible



MARAZZI

SAINT LAURENT

A refined, soft beige-grey surface with delicate linear texture, inspired by high-end travertine aesthetics.

Technological innovation, aesthetic refinement, and innate versatility: The Top, a selection of large-size porcelain stoneware Marazzi slabs specially designed for the creation of tops, backsplashes, tables, doors, and infinite tailor-made furnishing options for residential and commercial locations. The Top guarantees excellent technical performance, the result of exclusive research into materials and the application of the most advanced technologies.

Flexural strength

~45 MPa (≥ 35 MPa)

Water absorption

$\leq 0.5\%$ (often $\leq 0.05\%$)

Apparent density

~2.3–2.5 g/cm³ (typical porcelain)

Open porosity

Very low / near zero (impervious)

Frost resistance

Frost-Proof / Freeze-thaw resistant

Reaction to fire

A1 non-combustible



MARAZZI

GRIGIO CARNICO

A sophisticated medium-grey finish with dynamic white veining, reminiscent of Carnic stone.

Technological innovation, aesthetic refinement, and innate versatility: The Top, a selection of large-size porcelain stoneware Marazzi slabs specially designed for the creation of tops, backsplashes, tables, doors, and infinite tailor-made furnishing options for residential and commercial locations. The Top guarantees excellent technical performance, the result of exclusive research into materials and the application of the most advanced technologies.

Flexural strength

~45 MPa (≥ 35 MPa)

Water absorption

$\leq 0.5\%$ (often $\leq 0.05\%$)

Apparent density

~2.3–2.5 g/cm³ (typical porcelain)

Open porosity

Very low / near zero (impervious)

Frost resistance

Frost-Proof / Freeze-thaw resistant

Reaction to fire

A1 non-combustible



MARAZZI

SAHARA NOIR

A luxurious deep black finish with contrasting white veins, inspired by classic Sahara Noir marble.

Technological innovation, aesthetic refinement, and innate versatility: The Top, a selection of large-size porcelain stoneware Marazzi slabs specially designed for the creation of tops, backsplashes, tables, doors, and infinite tailor-made furnishing options for residential and commercial locations. The Top guarantees excellent technical performance, the result of exclusive research into materials and the application of the most advanced technologies.

Flexural strength

~45 MPa (≥ 35 MPa)

Water absorption

$\leq 0.5\%$ (often $\leq 0.05\%$)

Apparent density

~2.3–2.5 g/cm³ (typical porcelain)

Open porosity

Very low / near zero (impervious)

Frost resistance

Frost-Proof / Freeze-thaw resistant

Reaction to fire

A1 non-combustible

PVD COATING

*Physical Vapor Deposition



MULTI COLOR



GRAPHITE



GUN METAL



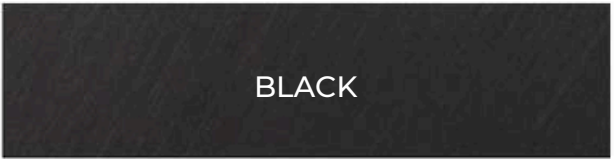
GOLD



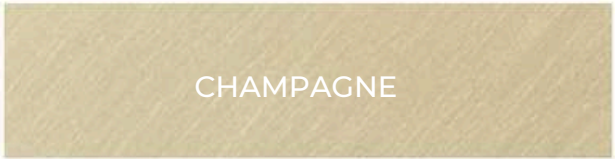
BRONZE



ANTHRACITE



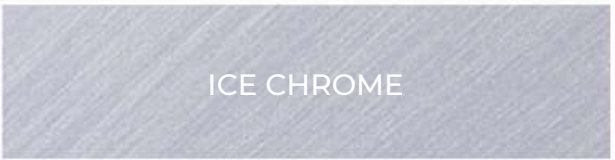
BLACK



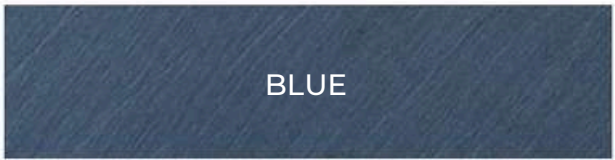
CHAMPAGNE



BHB



ICE CHROME



BLUE



ROSE GOLD

www.kortadesign.com

info@kortadesign.com

Connect with us

